



790 ADU

✔ 2 Bed ✔ 1 Bath ✔ 788 Sq Ft

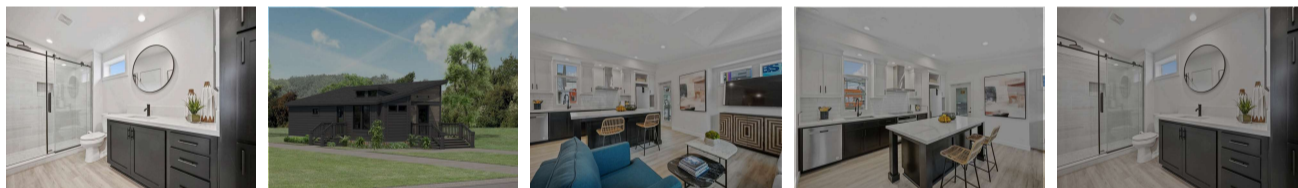
Compact 2-bed ADU with a modern island kitchen and efficient layout—ideal for guest, rental, or backyard living.

Crystal Cove [GS-2039H21AD1]



Explore 3D Space

POWERED BY



Contact a local retailer for home pricing. Additional fees, taxes, and delivery charges vary by region and home selected.

[Get Local Pricing →](#)

[Book a Showing →](#)

[Apply for Financing →](#)

[Download Brochure →](#)

[Mortgage Calculator →](#)

Specs



Home Type:
multi-section manufactured home



Series / Model:
790 ADU (Crystal Cove variant)



Size:
788 sq ft



Bedrooms:
2



Bathrooms:
1



Builder:
Silvercrest – Corona, CA



Status:
In Stock / Ready to Tour

[Call for Pricing →](#)

Description

The 790 ADU is a compact 2-bedroom, 1-bath accessory dwelling unit designed for efficient, everyday living. An open living and kitchen area with an island makes the main space feel larger, while two bedrooms and a full bath give you flexibility for guests, extended family, a small rental, or a backyard “casita.”

With its small footprint and quality Silvercrest construction, this ADU works in many backyards, small lots, and communities that allow secondary units.

Features

Interior

Exterior

- ✔ Open living / kitchen layout
- ✔ Kitchen island
- ✔ 2 bedrooms, 1 full bath
- ✔ Efficient plan that maximizes every square foot

- ✔ ADU-friendly footprint for tight sites
- ✔ Works in many community and private lot setups
- ✔ Exterior finish options (community/city rules dependent)

Similar Homes



Summit 25027

✔ 3 Bed ✔ 2 Bath ✔ 1,333 Sq Ft

Call for Pricing →

View Details →



Summit 25224

✔ 3 Bed ✔ 2 Bath ✔ 1,180 Sq Ft

Call for Pricing →

View Details →



790 ADU

✔ 2 Bed ✔ 1 Bath ✔ 788 Sq Ft

Call for Pricing →

View Details →



Lorem ipsum dolor sit amet, consectetur adipiscing elit. Ut elit tellus, luctus nec ullamcorper mattis, pulvinar dapibus leo. Lorem ipsum dolor sit amet, Lorem ipsum dolor sit amet, consectetur adipiscing elit.

Quick Links

- Home
- Homes for Sale
- Our Process
- About & Communities
- Contact & Financing

Contact

- Phone: +445678865678
- Text: +445678865678
- Email: info@communityhomesales.com
- Location: Serving California from our office in [City, CA]
- Hours: Mon–Sat, 9:00 AM – 6:00 PM

Stay in the Loop

Legal / Disclaimers: All prices, specifications, and availability are subject to change without notice. Images may show optional features and upgrades not included in the base price. All information is deemed reliable but is not guaranteed and should be independently verified.

© 2025 Community Home Sales, a DBA of Commercial Real Estate Investors, Inc. California DRE License #____ | Manufactured Home Dealer #____